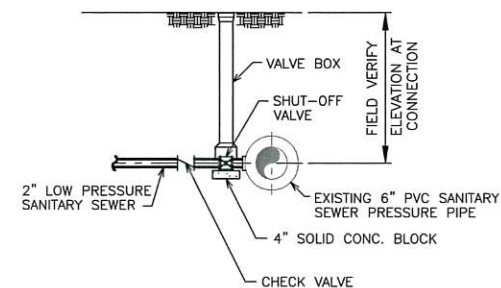
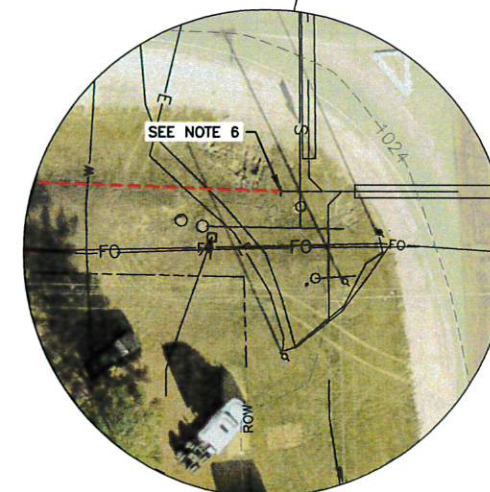


**NOTES:**

1. GROUND CONTOURS GENERATED FROM COUNTY LIDAR. BORE NEW 2" LOW PRESSURE SANITARY SEWER AT FLAT OR POSITIVE SLOPE SO THERE IS NO HIGH POINT BETWEEN STORAGE TANK AND CONNECTION TO EXISTING LOW PRESSURE SANITARY SEWER.
2. CONNECT TO EXISTING 6" PVC SANITARY SEWER PRESSURE PIPE WITH TAPPING SADDLE EAST OF EXISTING AIR RELEASE MANHOLE. SEE (172).
3. SEED ALL AREAS DISTURBED BY CONSTRUCTION.
4. CONFINE ALL CONSTRUCTION ACTIVITIES TO WATER TREATMENT FACILITY SITE AND HIGHWAY RIGHT-OF-WAY.
5. LOCATE EXISTING WATER MAINS PRIOR TO INSTALLING FORCE MAIN PIPING. MAINTAIN SPECIFIED CLEARANCES AT CROSSINGS.
6. FIELD LOCATE CONNECTION TO EXISTING LOW PRESSURE SANITARY SEWER.



CONNECTION - TO EXISTING  
LOW PRESSURE SANITARY SEWER (172)  
NO SCALE



DATE	REVISIONS	SCALE	AS NOTED
		DRAWN	BSS
		CHECKED	VJD
		APPROVED	HRV
DATE	10/16/18		
A.C.			



**VEENSTRA & KIMM, INC.**

**LOW PRESSURE SANITARY SEWER PLAN**

3000 Westown Parkway • West Des Moines, Iowa 50266-1320  
515-225-8000 • 515-225-7848 (FAX) • 800-241-8000 (WATS)

DWG. NO.

2

PROJECT 212156